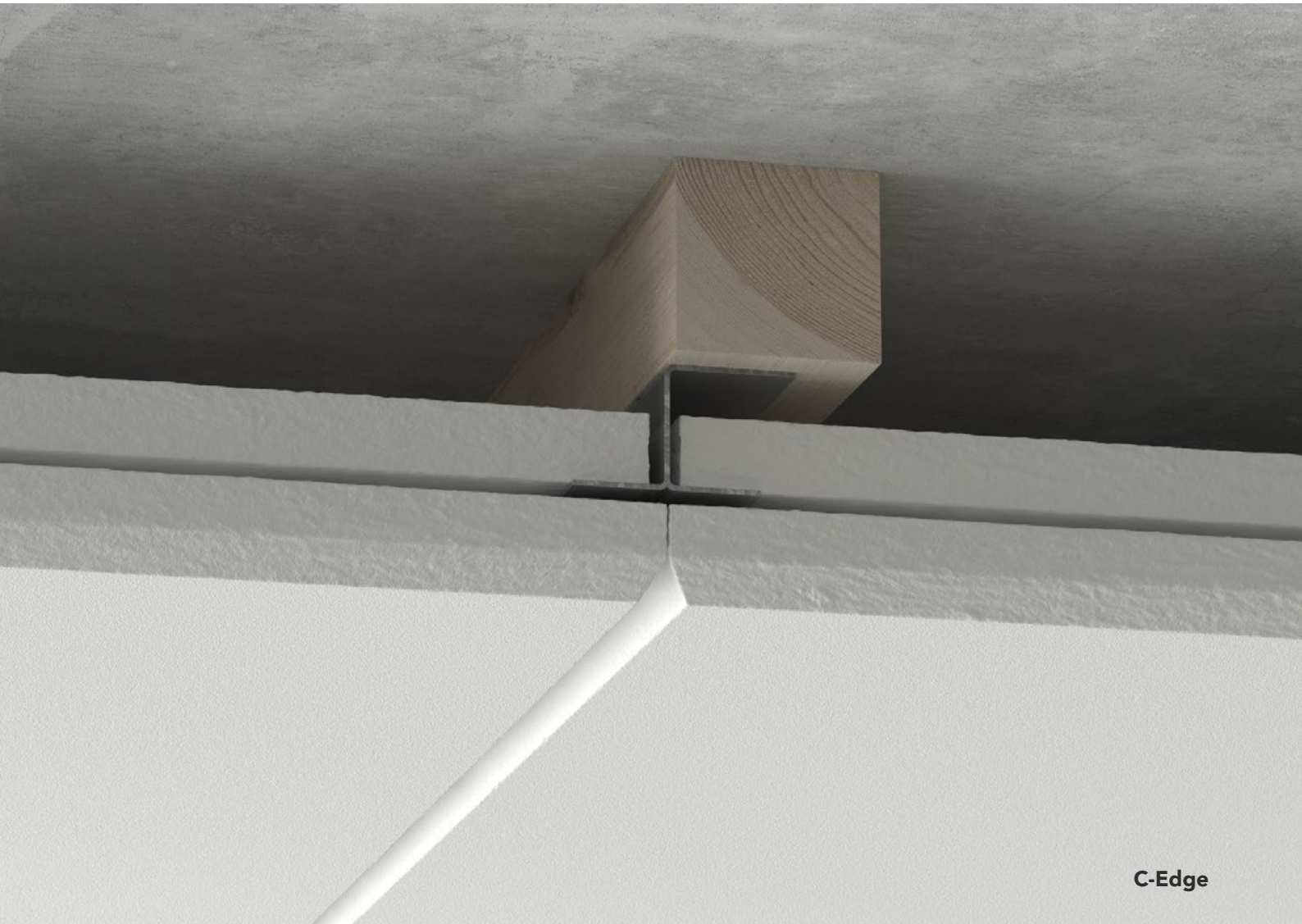


## INSTALLATION GUIDE

**Rockfon® System C Direct – Ceiling****C-Edge**

- Direct fix installation method for C-edge ceiling tiles
- Creates a concealed grid appearance
- Achieves a range of tile layout possibilities, including aligned or off-set patterns
- For quick installation of Rockfon Blanka Activity ceiling tiles

**Sounds Beautiful**

## Description

**Rockfon System C Direct** is installed directly onto concrete soffits or timber battens. The system can be installed on flat or inclined ceilings.

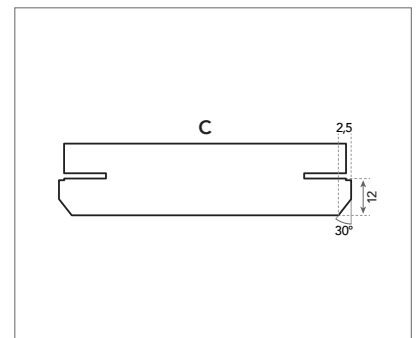
The system offers a range of layout options including aligned and offset patterns. The components within the system include galvanized C hooks, splines and Rockfon C-edge ceiling tiles in 600 x 600 mm, 1200 x 600 mm or 2400 x 600 mm dimensions.



C hook.



C hook, C-edge tile and splines.



C-Edge.

## System components and consumption guide

Tile	Components			Wall angles		Accessories
	1	2	3	4a	4b	5
-	C hook	Spline L = 200 mm	Spline L = 565 mm	J Profile 13 3050	J Profile 50 3050	SMF clip
Dimensions (mm)	Consumption/m <sup>2</sup>					
600 x 600 aligned pattern	5.6	5.6	2.8	*	*	*
1200 x 600 aligned pattern	5.6	5.6	1.4	*	*	*
2400 x 600 aligned pattern	5.6	5.6	1.4	*	*	*
600 x 600 offset pattern	5.6	5.6	2.8	*	*	*
1200 x 600 offset pattern	5.6	5.6	1.4	*	*	*
600 x 600 offset pattern	11.2	13.9	-	*	*	*

\* Consumption depends on room size.



### Components

1. C hook



2. Spline L = 200 mm



### Wall angles

4a. J Profile 13 3050



3. Spline L = 565 mm



4B. J Profile 50 3050



### Accessories

5. SMF clip

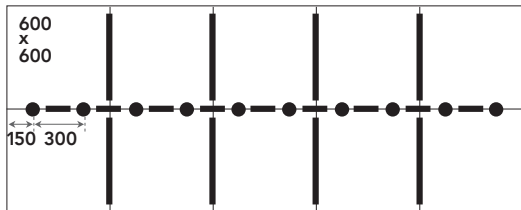


## Tile installation

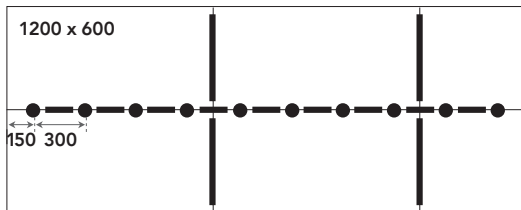
### Layout possibilities

Rockfon System C Direct can be installed in aligned or off-set patterns.

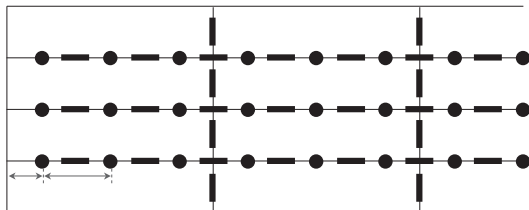
- Hook
- 200 mm spline
- 565 mm spline



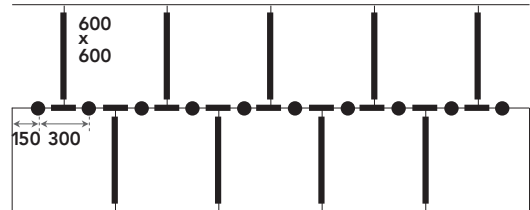
Aligned pattern 600 x 600 mm.



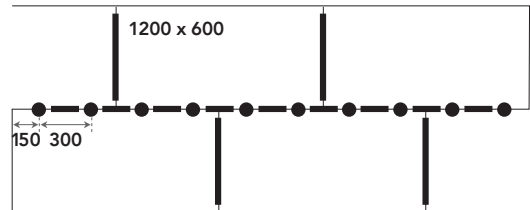
Aligned pattern 1200 x 600 mm.



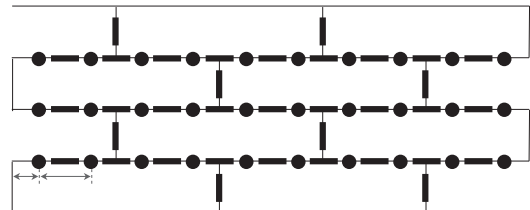
Aligned pattern.



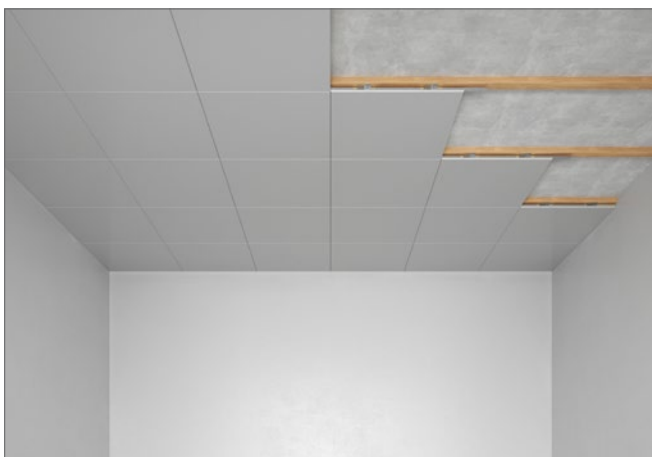
Offset pattern 600 x 600 mm.



Offset pattern 1200 x 600 mm.



Offset pattern.



## Performance



### System load bearing capacity

Additional loads must not be placed on the tiles. All loads should be transferred to the soffit/substrate.



### Demountability

Tiles mounted in Rockfon System C Direct are not demountable.



### Fire resistance

Some Rockfon ceiling systems have been tested and classified in accordance with European norm EN 13501-2 and/or national norms. Please contact Rockfon.

## Compatible tiles overview

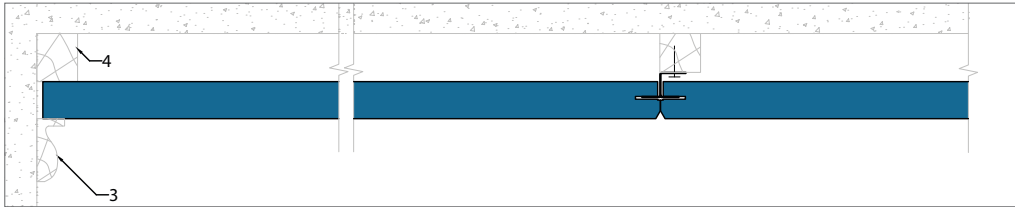
All Rockfon C edge tiles available in dimensions mentioned below can be installed in Rockfon System C Direct:

-	-	Dimension (mm)		
		600 x 600	1200 x 600	2400 x 600
Tiles	Thickness (mm)			
Rockfon Blanka® Activity	40	•	•	•

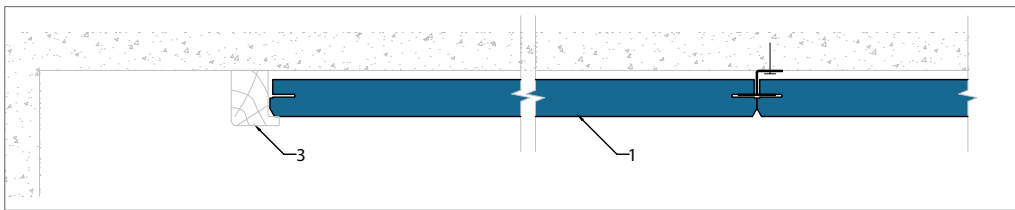
*Other dimensions may be possible. Please contact Rockfon.*

## Perimeter Finish Options

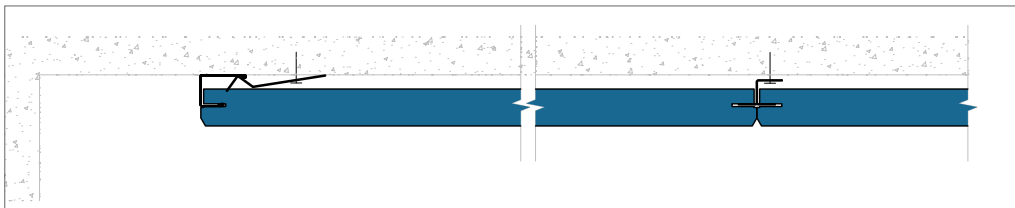
Below are examples of perimeter finishing. Further details can be found on [www.rockfon.co.uk](http://www.rockfon.co.uk)



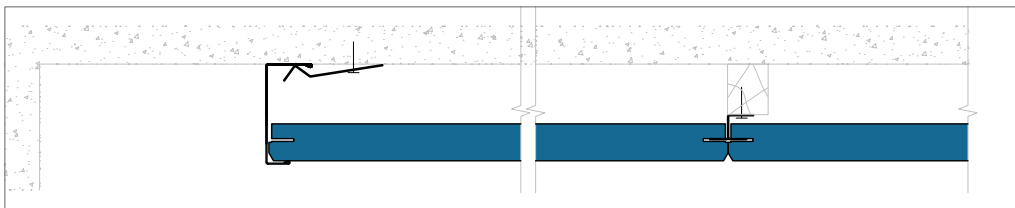
*Timber / similar perimeter moulding supplied by others*



*Timber / similar perimeter moulding supplied by others*



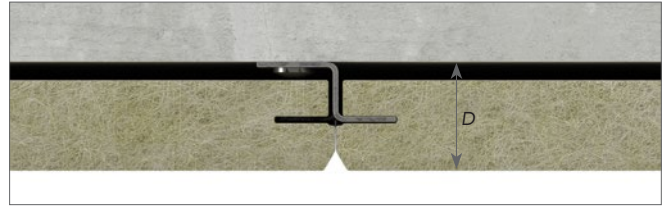
*J Profile 13 and SMF clip directly fixed to soffit.*



*J Profile 50 and SMF clip directly fixed to soffit, and C hooks on batten.*

## Minimum installation depth (mm)

Dimensions (A x B)	Diagonal (C)	D = Minimum installation depth
mm		
40	600 x 600 1200 x 600 2400 x 600	44



Installation depth with 20 mm batten is 44 mm.

## General installation recommendations

### Load-bearing capacity of system

Additional loads must not be placed on the ceiling tiles. All additional loads must be transferred to the soffit or substrate.

### Junction between ceiling and wall or other vertical surface

Timber beading is well-suited to this system. Install perimeter trims on three sides of the area prior to commencing installation of the tiles. The remaining trim can then be installed after the last row of tiles are in place.

### Mounting of ceiling tiles

The use of clean nitrile or PU-lined gloves is recommended when mounting Rockfon tiles in order to avoid finger prints and dirt marks on the surface.

For an optimised work environment, we recommend installers always observe good health and safety practices and follow the manual handling advice on our packaging.

Tiles can easily be cut with a sharp knife.

All off-cuts edges and holes must be treated in accordance with local Building Regulations.

### Important when using tiles with a smooth matt surface:

Certain smooth matt surfaces are directional. To ensure the uniform appearance of the finished ceiling or wall, it is important that all tiles are mounted in one direction indicated by the arrow printed on the back of each tile.

### Installation

Measure up, then start from the centre of the ceiling. Fasten the first row of hooks, making sure they are perfectly aligned. Install the first row of tiles in the hooks and install the connection plates into the tile edges. Then mount the subsequent rows of hooks, connection plates and tiles. At the wall angle, cut the tiles to allow a 14 mm gap between the wall and tiles. The cut edge of the perimeter tiles can be temporarily held in position with a small nail prior to the fastening of the last section of perimeter trim.

Unless otherwise specified, the ceiling should be mounted symmetrically, with no tiles narrower than 200 mm at the perimeters.

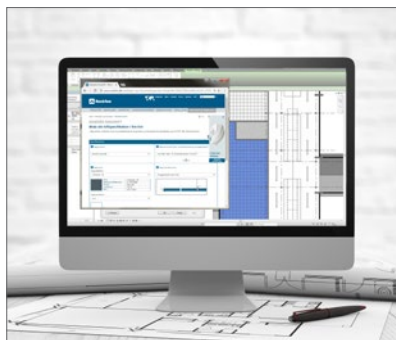
It is important that the ceiling is completely level, or, if installed on a gradient, that it has a uniform angle. In the case of an uneven substrate, it is best to install timber battens (15-25 mm) to even out the differences. Note: if fixing to timber battens, the last perimeter timber batten can be adjusted so that it is 4 mm thicker than the other timber battens. This ensures that the ceiling is level and flat. The cut perimeter tiles can then be held temporarily in position before applying the finishing trim.

## Tools

Rockfon has developed specific tools that are available on [www.rockfon.co.uk](http://www.rockfon.co.uk).



Visit our online CAD Library or BIM portal to assist you in your project design.



Generate specification texts for our products on our website.



Explore our vast library of reference projects on our website.



# Sounds Beautiful

